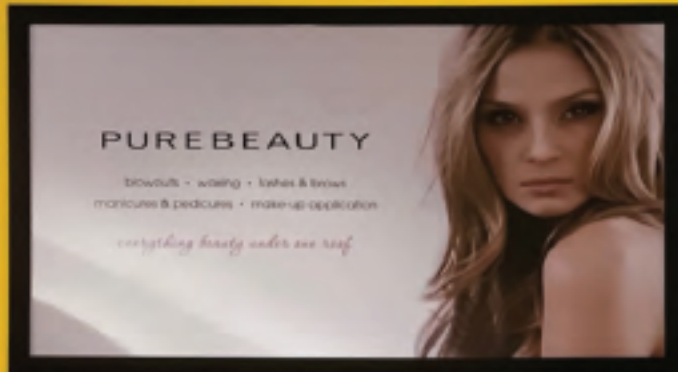
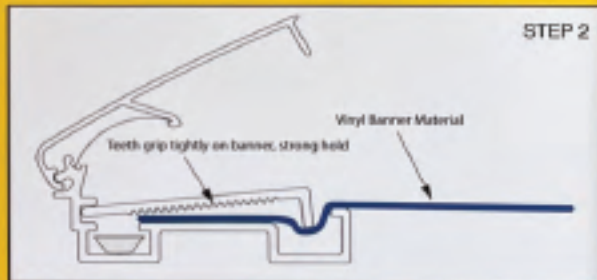
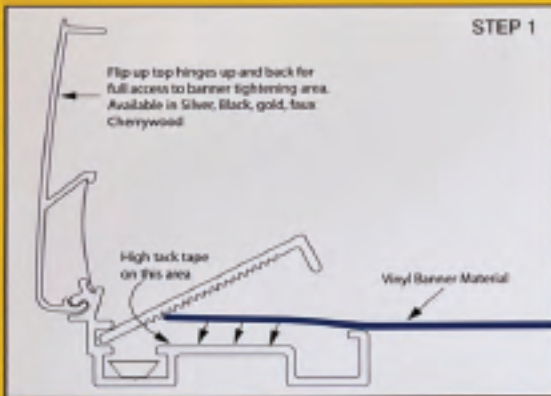


Banner Snap Grip Flip pre-installation instructions and overview



Amazing new flip up frame that stretches any size vinyl banner within the frame, and the tops snap down to cover the banner edges. There are no visible external screws, and the profile is only 2.5 inches wide!

Create large and beautifully, drum-tight stretched vinyl banner displays!



Patents Pending. All Rights Reserved.

All 4 frame sides flipped down to cover all the stretcher bars and screws.
Drum tight and beautifully displayed! No visible screws. Indoor or outdoor use.

Before you begin installing your banner frame, please check the following:

1. Your banner must be sized 1.50 inches less than the OD of your frame. The trim size of your banner will match the 1 inch wide tacky area in your frame.

After the banner is stretched, some of your banner all around is covered by the Flip down top. When banner is printed, graphics and images should be a minimum 2.75" inches away from all 4 edges of the cut banner material. This will leave about a .75~1 inch dead space between the inside edge of the Flip down TOP and where your graphics begin –"live area." For example, if you order a 48" x 96" OD frame, your raw cut edge banner must be 46.50" x 94.50". Your live or viewable area for this example will be approximately 41" x 89". To order by "Live Area" add 5.50 inches to your desired live area length and width to obtain raw cut dimensions of banner needed. Add an additional 1.50 inches to length and width to obtain the OD of banner frame needed. So, if you want a live area of 48" x 96", cut size of banner will be 53.50" x 101.50" and OD of frame will be 55" x 103".

2. Your banner material should ideally be 18 oz banner for the best results. Solid vinyl scrim, not mesh material. Do NOT use this frame for box truck or tractor trailer sides unless screw down **Option 1 is added, which screws down the top to the BASE. Otherwise top can flip up and fall off if on a moving vehicle or trailer.**

3. Your banner must ONLY have raw cut edges, no hems, fold overs, no grommets.

Max suggested frame sizes: This frame is best for banner sizes that are not more than 120" wide of high on one of the sides x any length This frame can be used for larger sizes, but you may not get a perfect, wrinkle free stretch, although the banner will still look great. Our clamp or hook full size main Banner Grip™ frame is best for the largest banners.

4. First, hang Top rail on wall using a level. Mounting holes are provided and you can add more in the outer channel if necessary. Do not put mounting holes in the "inner track channel."

. | | a

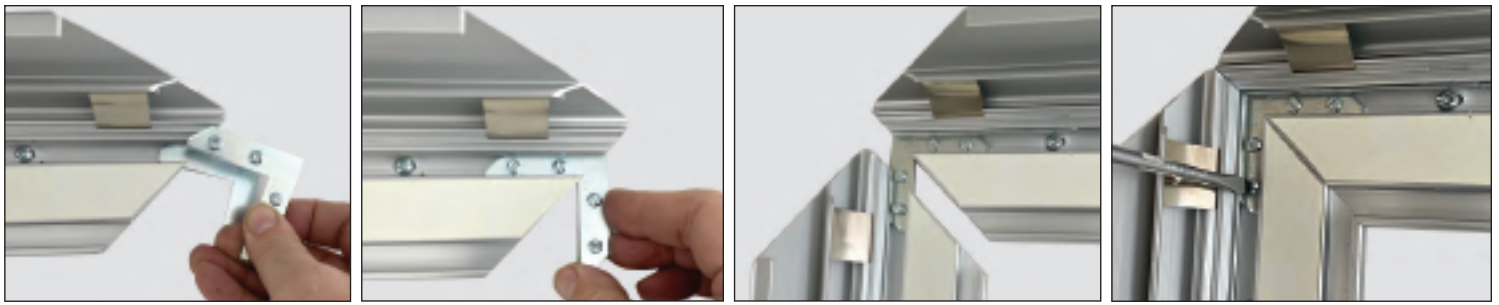


Do NOT install the anchor on the inside of the frame, the anchor will pull out. You MUST install the anchor into the hole in the wall, and lightly hammer in. Then, on the inside of the frame, use screw to fasten frame to wall. These anchors and screws are good for brick, concrete, drywall.

We supply high quality Sharkie brand nylon anchors and #10 zinc sheet metal screws for mounting to brick wall or drywall.

Mounting holes only in this back channel by hinge.

No holes in this inner channel.



INSTALLATION GUIDELINES FOR SHARKIE SCREW ANCHORS

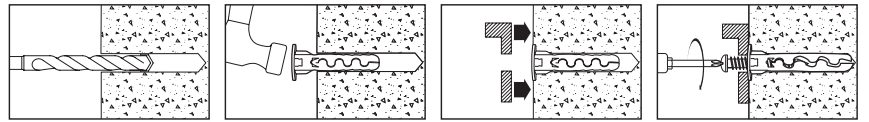
1/4 size magnetic tipped screw holder for #8 x 1/2 410SS 1/4 hex head self drilling screws



Small cordless driver with clutch setting on low number

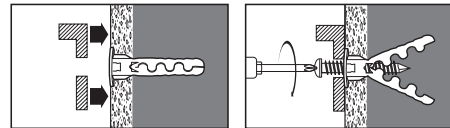
1/4 size nut driver for precise tightening #8 screws for CAPS

Solid Base Material



1. Drill hole into solid wall.
2. Push in anchor and tap flush to wall.
- 3a. Place item over anchor. Jaws will compress against base material.
- 4a. Insert screw and tighten flush with item.

Hollow Base Material



- 3b. Place item over anchor
- 4b. Insert screw and tighten flush with item. Jaws will lever and wedge open.

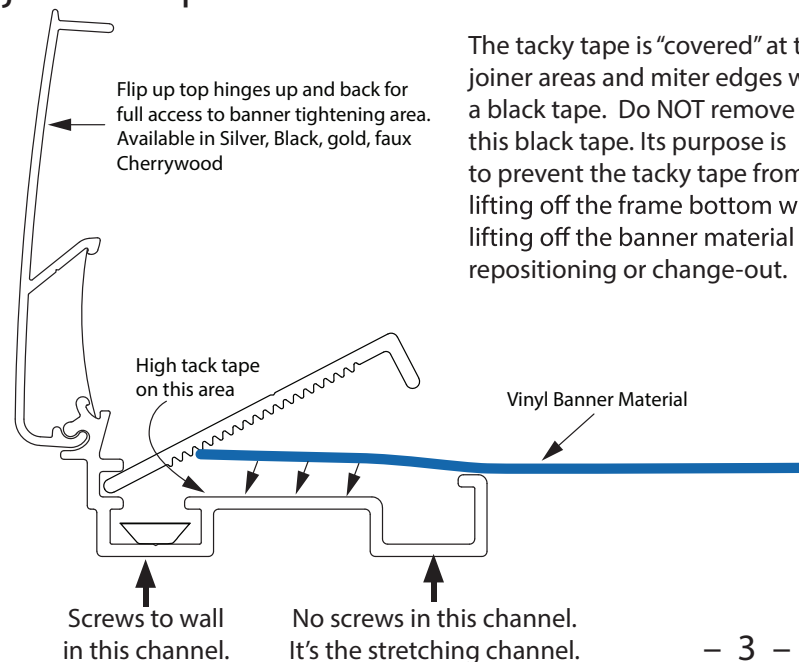


Sharkie Wall Anchor

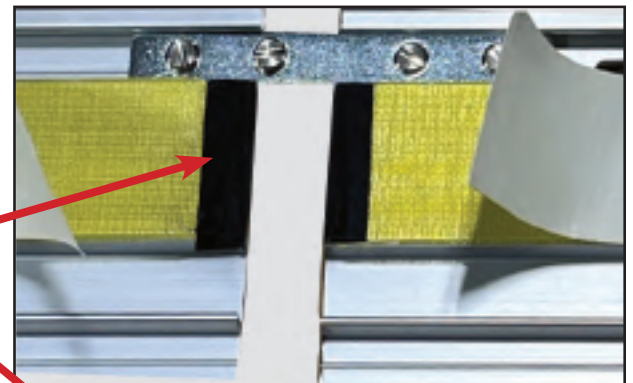


#10 x 1.25" Flat Head Screw

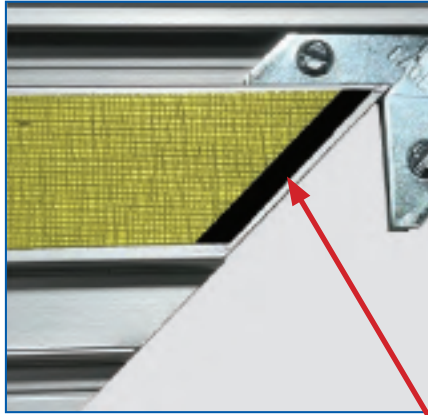
For longer sections, use provided joiner strap to connect sections.



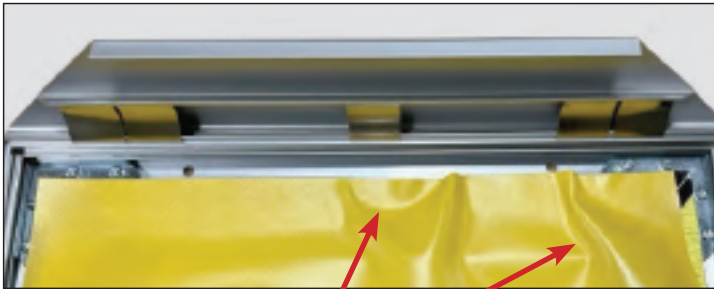
The tacky tape is "covered" at the joiner areas and miter edges with a black tape. Do NOT remove this black tape. Its purpose is to prevent the tacky tape from lifting off the frame bottom when lifting off the banner material for repositioning or change-out.



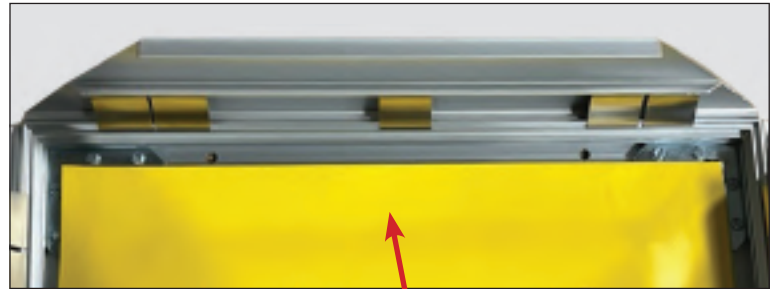
6. Peel off liner to expose sticky tape. Tack top of banner to tacky tape. Make sure to position level and aligned in the corner. You can remove and reposition as needed so that banner is tacked onto the BASE of the frame as smoothly, hand tight, and wrinkle free as possible.



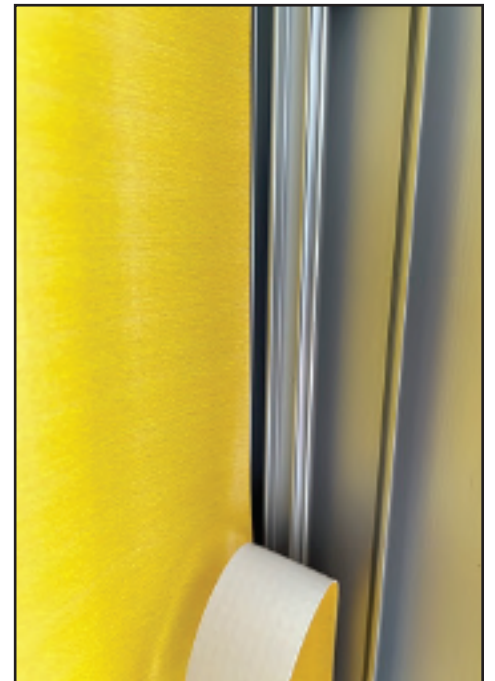
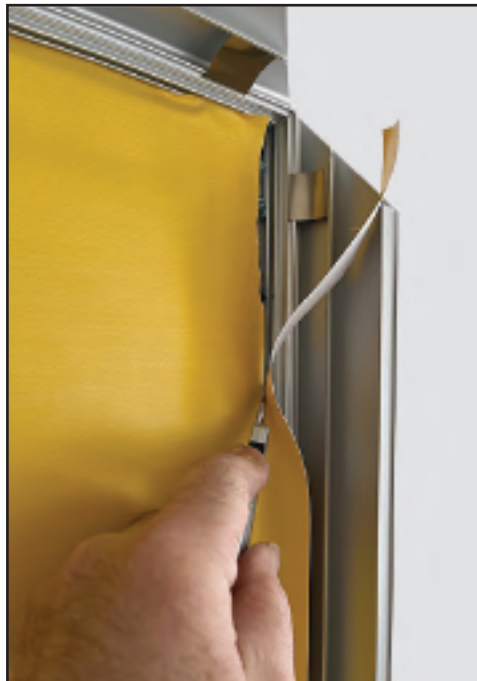
The tacky tape is "covered" at the miter edges with a black tape. Do NOT remove this black tape. Its purpose is to prevent the tacky tape from lifting off the frame bottom when lifting off the banner material for repositioning or change-out.



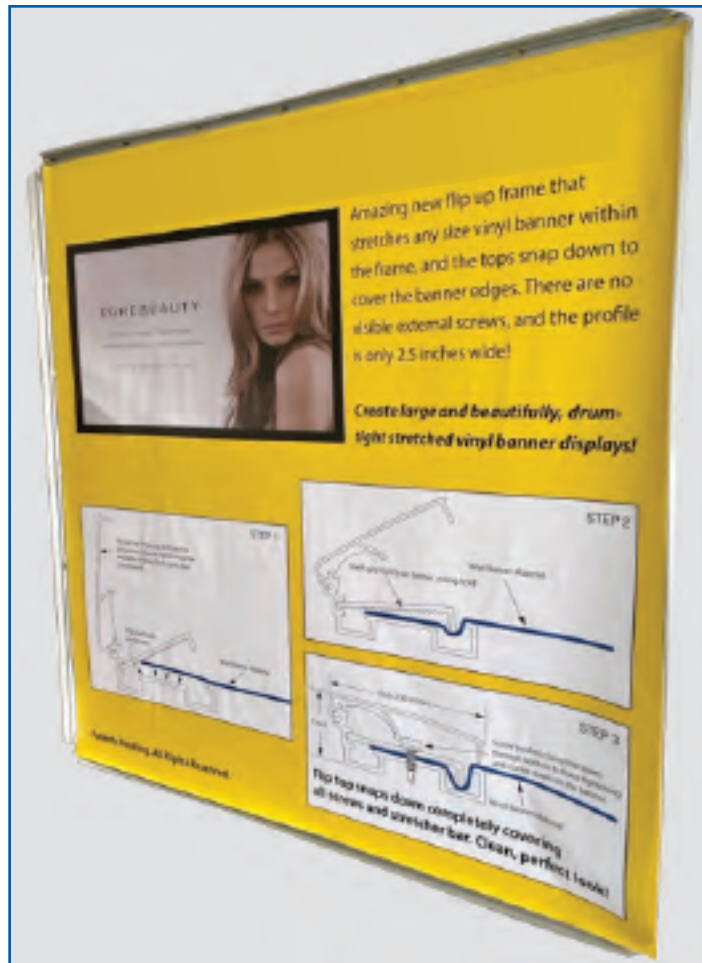
Don't leave bunchups and wrinkles like this.



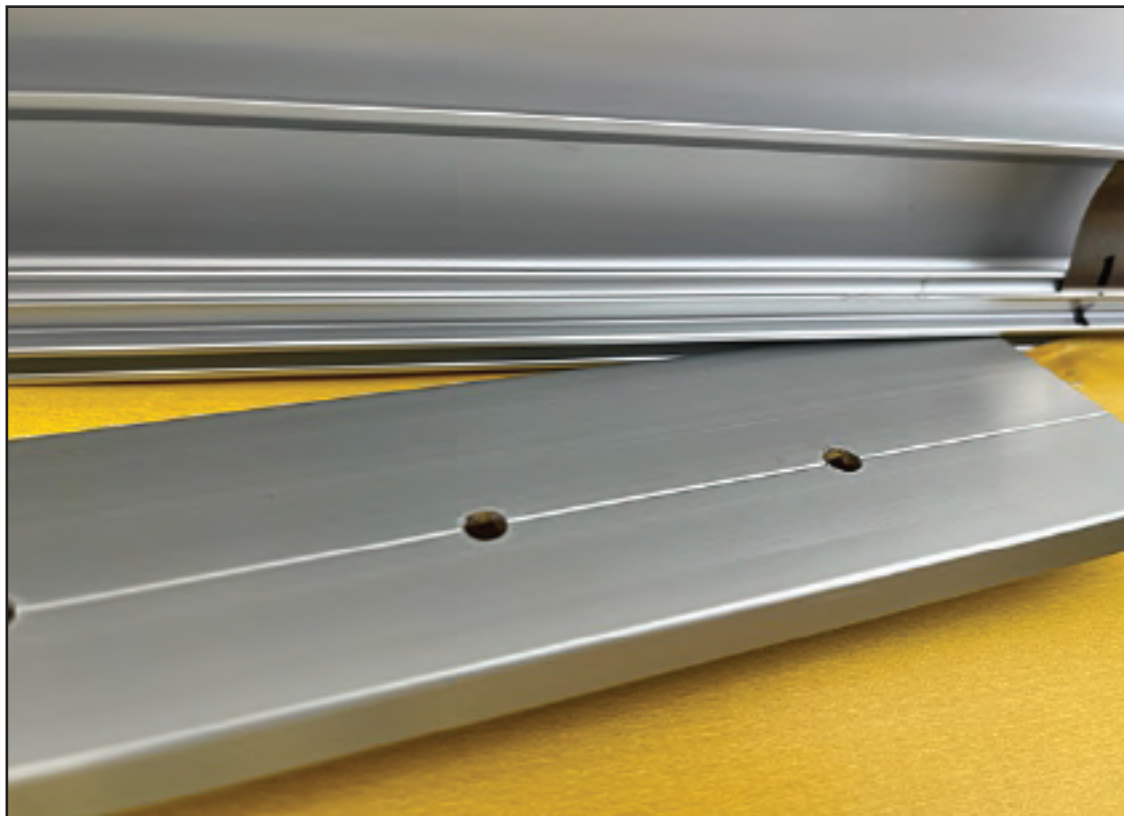
Make banner tight and smooth.



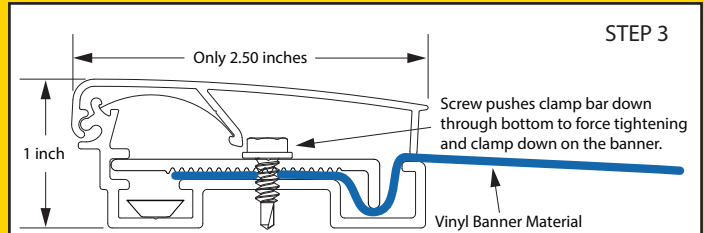
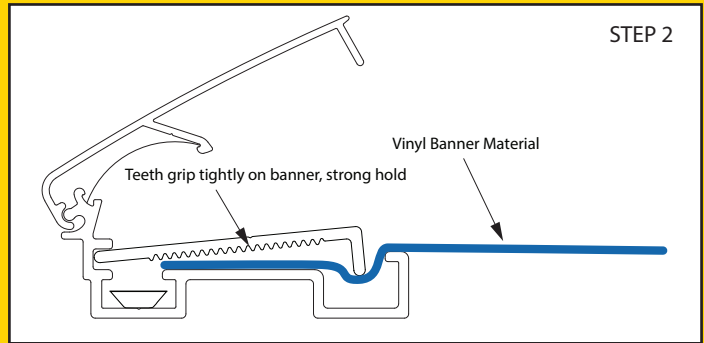
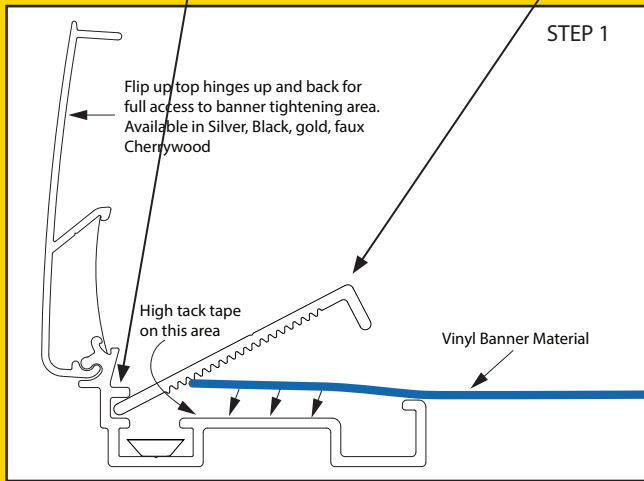
To get the best, wrinkle free final stretch, it's very important you hand stretch the vinyl banner onto to the tacky tape as tight as possible within the frame before screwing down the stretching bars. Trim off any excess banner material within the frame as shown above.



7. Next, you'll be inserting the stretcher bar into the back channel of frame bottom. Make sure it's fully inserted into the back channel.



Stretcher bar into this back channel Stretcher Bar



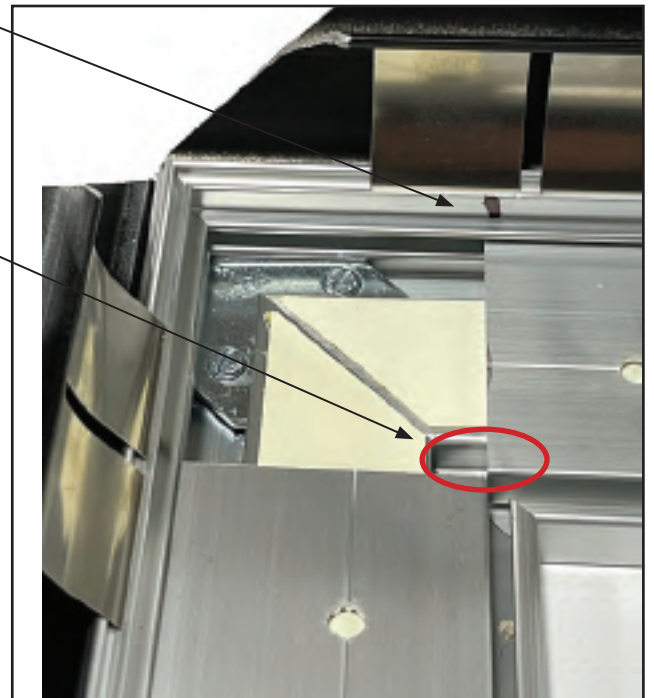
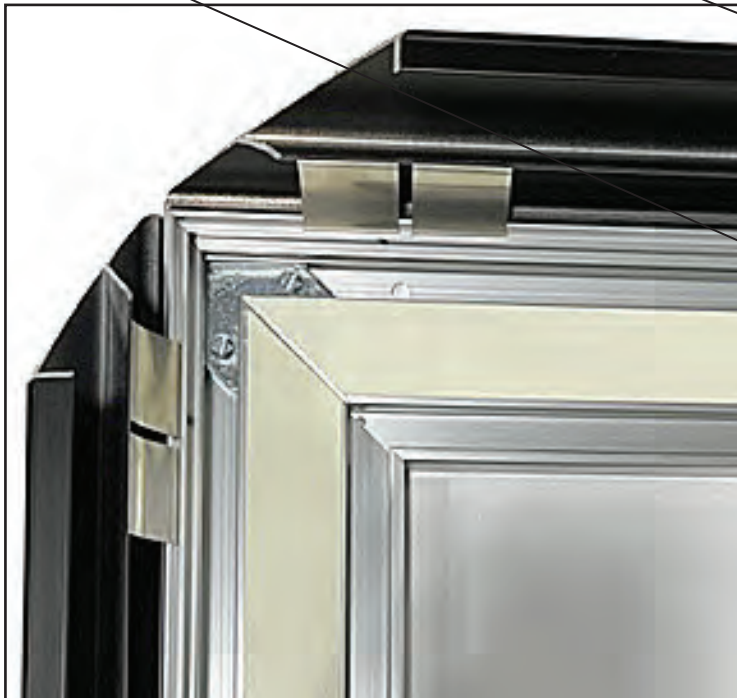
Flip top snaps down completely covering all screws and stretcher bar. Clean, perfect look!

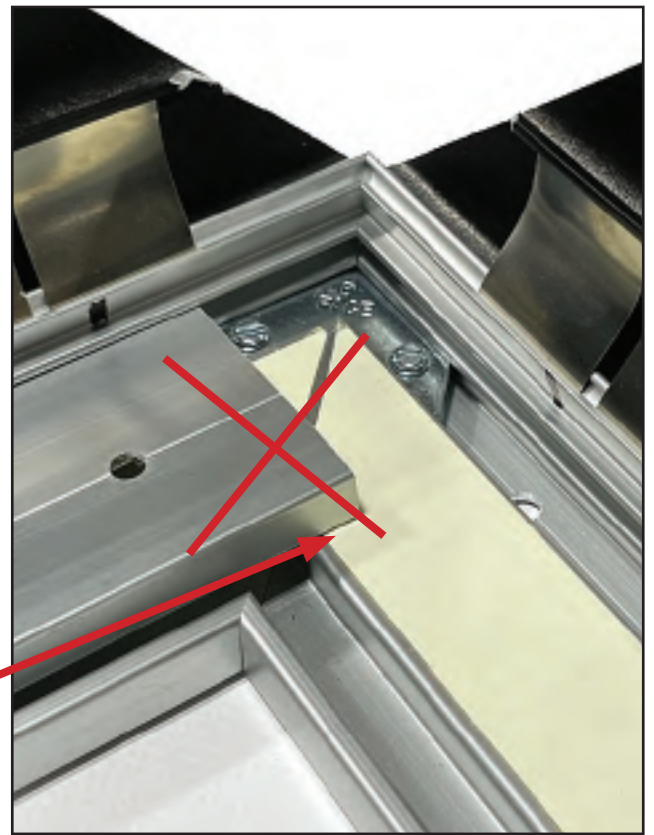
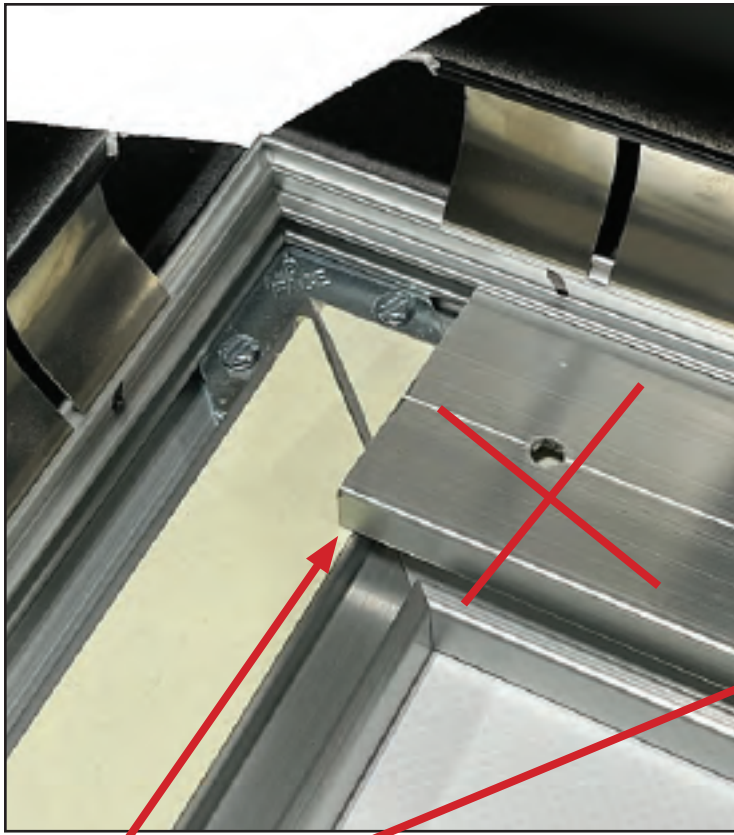
Patents Pending. All Rights Reserved.

The illustration below shows how the Stretcher bar works once your banner is tacked onto the frame base. Your Stretcher bar must be positioned as shown below. There will be black lines marking the point you must not pass, otherwise you will not be able to tighten down the stretcher bar. If the stretcher bar is too far over to the corners, it will get hung up on the tacky tape surface, and you cannot screw down. See below.

Meet at the corners

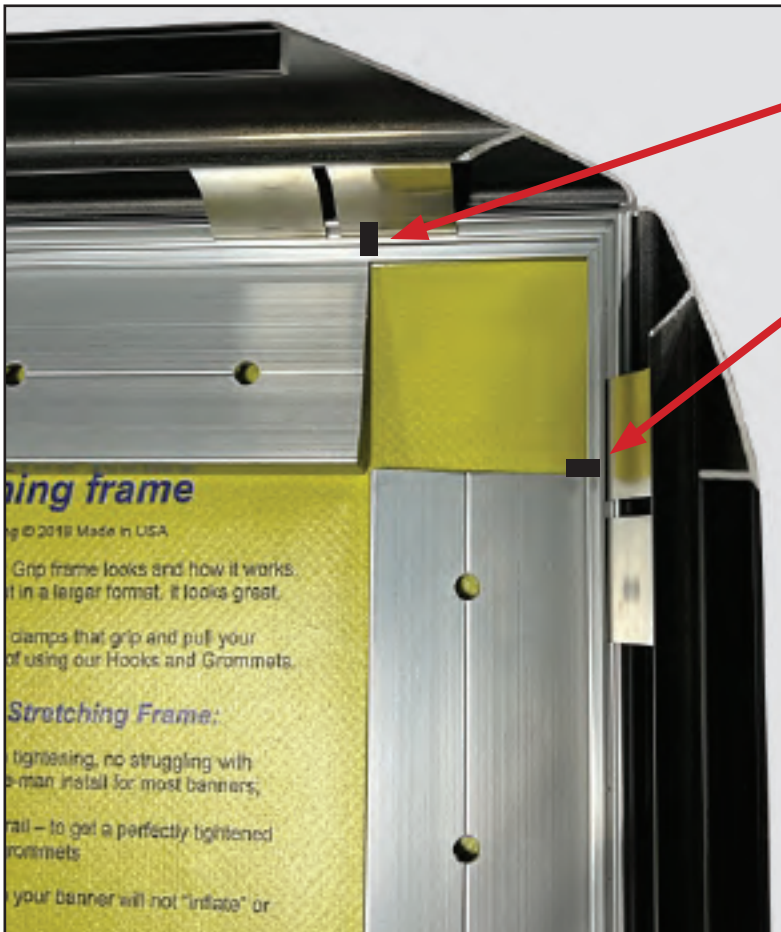
Not past this line





Stretcher bar too far over, won't go into channel to stretch out banner because it's sitting on top of the tack area.

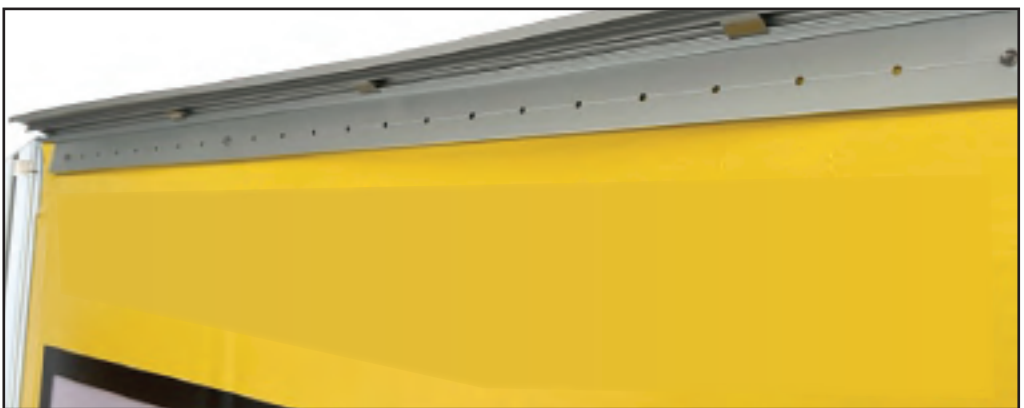
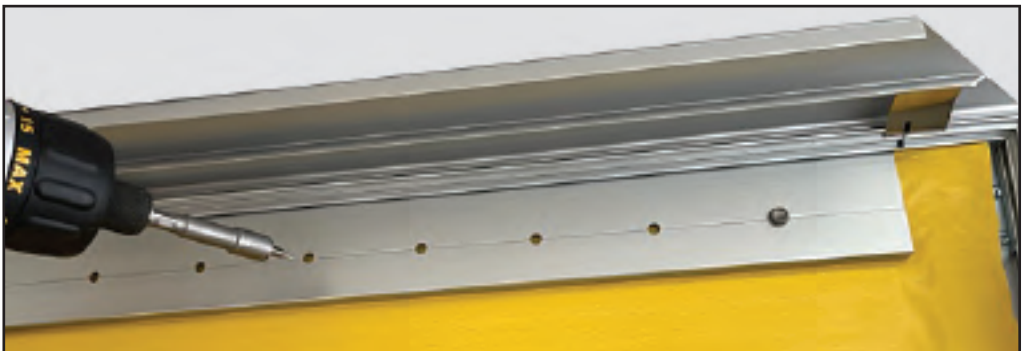
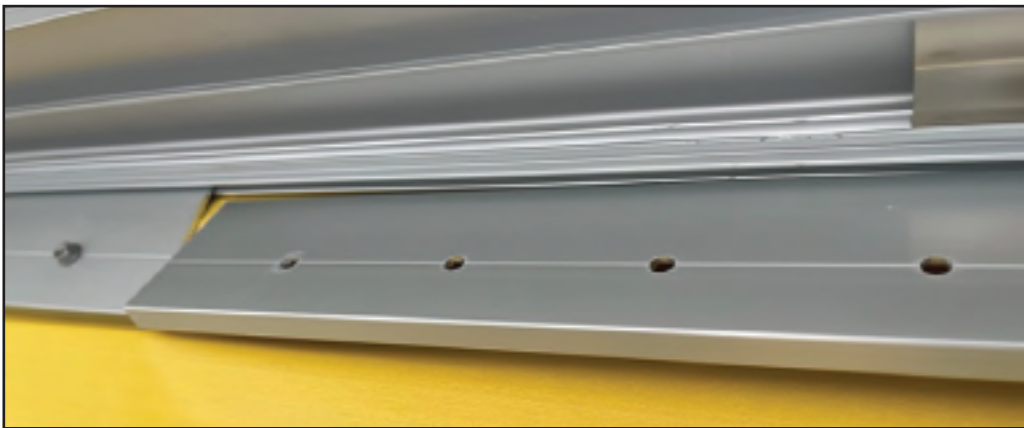
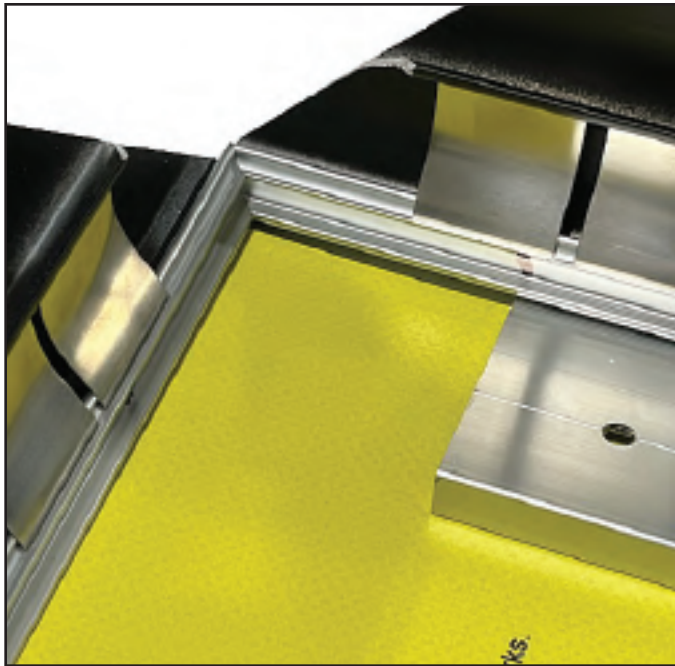
There will be black marks to show where to put the stretcher bar. Don't go past these marks.



It is very important you position these Stretcher bars as shown in these pictures, and not going past the black marks, otherwise you won't be able to tighten down the Stretcher bars.

Stretcher bars are up to 48" long with pre-punched holes. We will provide the pre-cut stretcher bars for all 4 sides of your frame. They will be numbered for easy install.

You do NOT need to screw down the Stretcher bar on all the holes, only about 8-12 inches apart. You can add more screws to in-between holes if you have wrinkle areas in the banner, or make your own new holes wherever you need.



Stretcher bar install continued...



Stretcher bar installed along all 4 sides and screwed down.

PUREBEAUTY
↓ brows ↓ waxing ↓ salon & brow
massages & esthetics ↓ make-up application
everything beauty under one roof

Amazing new flip up frame that stretches any size vinyl banner within the frame, and the tops snap down to cover the banner edges. There are no visible external screws, and the profile is only 2.5 inches wide!

Create large and beautifully, drum-tight stretched vinyl banner displays!

STEP 1
Flip up top hinges up and back for full access to banner tightening area. Available in Silver, Black, gold, face Cherrywood
High tack tape on this area
Vinyl Banner Material

STEP 2
Teeth grip tightly on banner, strong hold
Vinyl Banner Material

STEP 3
Only 2.50 inches
Screw pushes clamp bar down through bottom to force tightening and clamp-down on the banner.
1 inch
Vinyl Banner Material

Flip top snaps down completely covering all screws and stretcher bar. Clean, perfect look!

Patents Pending. All Rights Reserved.



Flip down tops to cover stretcher bars, you're all set!